

GRACEADES COMMUNITY COTTAGE INC.



2018 to 2019 ANNUAL GENERAL MEETING REPORTS

*** MISSION STATEMENT ***

By providing an efficient level of service provision and innovative work practices, Graceades Cottage aims to create an integrated community hub that is inclusive and responsive to local needs.

*** VALUE STATEMENT ***

By providing diverse services that offer equal access to all who live in the community we continue to build effective partnerships and networks that assist in supporting and promoting stronger communities that are sustainable.

*** VISION ***

Mt Druitt, a community that is:
Committed to Social Justice, Caring and Cohesive,

Informed and Pro-active

Resilient,
Respectful,
Responsive,

Strong,
United,
Vibrant,

Has Pride and a Strong Voice

GRACEADES COMMUNITY COTTAGE INCORPORATED

GRACEADES COMMUNITY COTTAGE INC.

1982 to 2019



- **What's it all about?**
 - **Community Involvement**
- **Social – Recreational & Cultural Activities**
- **Service Information & Referral – Advocacy**
 - **Access to Phone – Fax – Photocopier
Computer & Internet facilities**
 - **Meeting Place - to connect with other
local residents across
Generational – Cultural – Geographical &
Social Boundaries**
 - **The Shed – Drop In for Young People**
 - **Outreach Programs**
 - **Men's Group**

CONTENTS

MISSION STATEMENT

WHAT'S IT ALL ABOUT?

ACKNOWLEDGEMENT

AGENDA

MINUTES PREVIOUS ANNUAL GENERAL MEETING

VICE-PRESIDENT'S REPORT

MANAGER'S REPORT

PROJECT REPORTS

AUDITOR'S REPORT

MANAGEMENT COMMITTEE NOMINEES

ELECTION of MANAGEMENT COMMITTEE

GRACEADES COMMUNITY COTTAGE INC.

ANNUAL GENERAL MEETING Wednesday 23rd October 2019

AGENDA

Welcome:

Acknowledgement of Place:

President:

Meeting Opened:

Apologies:

Attendance: Please sign attendance book

Minutes of Previous Annual General Meeting:

Annual General Meeting Reports:

President's Report

Manager's Report

Project Reports

Auditor's Report & Nomination of Auditor for 2019-2020

Acceptance of Reports:

Business Arising from Reports:

Thanks to outgoing Office Bearers:

Returning Officer:

Elections of new Office Bearers:

Meeting Closed:

GRACEADES COMMUNITY COTTAGE INC.

ACKNOWLEDGEMENTS

The Board of Management and Staff of Graceades Community Cottage would like to thank the volunteers and organisations that have supported us during the past year.

To the community members who have volunteered their time and helped in so many various ways, from assisting with the running of programs including School Holiday Program to helping with gardening, repairs and maintenance of the Cottage, we express our sincere thanks and appreciation. If not for your continued support the Cottage would not be able to continue our work in this community.

We would also like to acknowledge the organisations that have supported us and assisted us financially during the past year.

NSW Family & Community Services: Re-current Core Cottage Funding

NSW Family and Community Services Housing: Provision of venue - 2 Rose Court, BIDWILL

Australian Government: Department of Infrastructure and Regional Development: The Cottage Garden

Marty Secheny: Bidwill Hotel -The Cottage Garden—Basket Ball Court

Ed Husic - Federal Member for Chifley - Funding for the Cottage Garden

Social Housing Community Improvement Fund - SHCIF Round 1—Cottage Gardens
Security Cameras and Pergola

Social Housing Community Improvement Fund - SHCIF Round 2 - Cottage Gardens

Concrete Slab and Concrete Paths for Disability Access

Volunteer Grant-Fresh Food Friday

Uniting Ability Links Funding of Community Ideas Projects, funding for concrete paths and disabled garden beds

St George Bank - Basket Ball Hoop

Awesome Handyman — Sammy—Basket Ball Court

SpecSavers Plumpton — Donations

Gloria Aslan — Girls Empowerment Program

The financial support of these organisations is vital for the Cottage to be able to carry on with the provision of services for the local community.

WORKING IN PARTNERSHIPS

**Here at Graceades Cottage we recognise our most important partnership is with the people living around the Cottage. So
THANK YOU TO OUR NEIGHBOURS!**

The ongoing support and encouragement of the following organisations and individuals is also greatly appreciated by the Graceades Management and Staff.

Community Resource Network: Community Connect & Governance Support.
Family Referral Service
Mental Health Commission

Peter Cvetkovski: IT Help Volunteer

Bidwill Community Garden

Chloe - Bidwill Community Voice - Community Newsletter

Women's Multicultural Luncheons
Partnerships - MECA, CatholicCare Social Services
WASH House Inc. Mission Australia

Bidwill On Board
Community Resource Network
Work Placement Volunteers
Rap 4 Change

Mt Druitt TAFE - AOD/Mental Health & Youth Student Placements
OTEN TAFE - Community Welfare Student Placement Program

GRACEADES COMMUNITY COTTAGE INC.

GRACEADES COMMUNITY COTTAGE

ANNUAL GENERAL MEETING

17th October 2018

MINUTES

Meeting Opened: 11.07 am

Welcome:

Barbara Hopkinson acknowledged that we were meeting on Aboriginal Land of the Darug people. She then paid respects to Elders past and present.

Patricia Formosa welcomed all those present to the AGM.

The meeting was then turned over to the Chairperson Elaine Parker

Attendance: 32 as per attendance book

Apologies: Edmond Attalla MP, Ed Husic MP ,Margaret Bell, Debbie Higginson

Minutes of Previous AGM:

The minutes of the previous AGM were presented to the meeting and were then passed as correct. Accepted: Barbara Hopkinson: Seconded: Kaye Reeder.

AGM Reports:

President's Report

Elaine read out the report to the meeting. She thanked the other committee members for their support while she was in the acting President role after Kaye stepped down.

Manager's Report

Patricia thanked the management committee for their continuing support and all the hand on assistance they have provided to the Cottage. Patricia then thanked all the volunteers and facilitators who worked on all the programs and events during the year and also the TAFE students who contributed greatly to the programs they were participating in. Patricia advised that the METS Men's Group was going well and gave an update on the outcomes of the Productivity Bootcamp program which has now been completed. Patricia then thanked all the staff and congratulated them and the committee on their great teamwork that has made to past year a success.

Program Development Worker's Report

Ivanka presented her report and told of all the activities and programs that happened throughout the year. She advised the meeting of the continued success of the WDO project, the Work for the Dole program, Fresh Food Friday food hamper distribution, groups and activities and the Wednesday fortnightly dinners that took place over the past year at Graceades. Ivanka thanked the volunteer workers who have assisted with the sorting and distribution of the many donations the Cottage is receiving out into the community members needing assistance. The response from the wider community with donations, volunteer assistance and help has continued strongly and is very much appreciated. She thanked the volunteers, facilitators and students for their valuable support with our outreach activities and thanked the Cottage management and staff for their continued support and assistance with her programs.

Acceptance of Reports

President's report and Worker's reports were: Accepted: Barbara Hopkinson and
Seconded: Brenda Martin

Treasurer's Report

A summary of the auditor's report was included in the AGM report booklet and a full copy of the audit was available for anyone to view.

Nomination of Auditors for 2018/19

It was recommended that Ross Fowler and Co be appointed as auditors for the 2018/2019 financial year

Nominated: Barbara Hopkinson Seconded: Kaye Reeder

Business Arising

No business arising.

ELECTION OF NEW COMMITTEE

Patricia thanked the outgoing committee for their dedication and hard work and turned the meeting over to the returning officer, Margaret Tipper

Nominations for the following positions were accepted by the nominees

PRESIDENT Lynda Murphy

VICE PRESIDENT Elaine Parker

TREASURER Barbara Hopkinson

SECRETARY Lee Ann Murray

ORDINARY MEMBERS Julie Britton
 Kaye Reeder
 Donna Chate

The new committee was congratulated and Patricia thanked the Returning Officer then turned the meeting over to Elaine who thanked everyone for attending, declared the meeting closed and invited all to join in the lunch.

Meeting Closed: 11.50 pm



**Thank you to Dennis King who
kindly painted the Digeridoo and his son,
Andrew King painted the Boomerang.**





GRACEADES COMMUNITY COTTAGE MANAGER'S REPORT

MANAGER'S REPORT

2018-2019 – A Year of Slow Change on Many Fronts



Change in the Community Sector can often be agonisingly slow!

This has certainly been the case of this latest 'Reform Process' in NSW.

After downsizing staff in both the Housing NSW and Community Services streams of FACS over the past 3 to 5 years of the Reform Process, our Funding Contracts have been rolled over (and over) from the 'Community Builders' funding stream whilst we invested countless man-hours in attending Summits, Forums, Workshops, Information Sessions, Consultations to come up with the **Targeted Earlier Intervention Program**.

FACS our Core Funding Body has determined by this process, that many vulnerable, disadvantaged and marginalised People and Families are being "Let Down" by the Community Service System. **I personally dispute this statement.**

It is my **Personal Belief** that Vulnerable/Disadvantaged and Every Day people and families in Australia are being "Let Down" by our Political Leaders, of all persuasions, who will not allocate appropriate "Dollars" to the Community Welfare Funding Budget. **I must stress – this is my personal opinion.**

As the Manager of Graceades Community Cottage I definitely dispute that "At Risk and Vulnerable people" have been "Let Down" by the NSW Community Service System.

I see at 1st Hand the wonderful 'Crisis Intervention and Early Intervention' programs and services being delivered to Western Sydney families – and right across Australia, on a Shoe String Budget. I see, every day, the line-up of people waiting at Ivanka's door – for someone who will listen and act on their behalf. Someone who is the 'Go-To' person to get things done.

Each week I also see at 1st Hand the numbers of families who are helped by the Free Food Friday Hampers packed and distributed by our wonderful volunteers. I am extremely grateful to Oz Harvest and Christ Mission Possible who supply us with the food.

Our great volunteers who pick up Household Goods and Furniture and drop it off to those in need – really special people. Those people who bring donations to Graceades Cottage because they know the goods will go directly to families who need help. All of this gives me hope – **People helping People** – this is really **how it is meant to be**.

Now all we need is for the Politicians to adequately fund Community Services which consistently prove they provide positive outcomes for vulnerable, disadvantaged and marginalised people and families in our communities. **Now that would mean a sizeable increase in Graceades Community Cottage Funding Income.**

MANAGER'S REPORT - Continued

2018-2019 – A Year of Slow Change on Many Fronts

Ivanka will bring you up to date with Cottage Programs and Projects.

I would like to personally thank all the wonderful volunteers who help out here at Graceades Cottage. I know that without your help our staff could not possibly produce the volume of Positive Outcomes that we record and report on each year.

More importantly, in real terms, these volunteer hours enable Graceades Cottage staff to spend quality time with “people” – listening, caring and actually supporting people and families to secure the best possible outcomes, for themselves, their families and communities.

One really important Government Department who needs to be mentioned is Housing NSW. This state government department known as “Houso” has recognised the importance of support for vulnerable disadvantaged and isolated communities right back since 1981. They have been known by a number of different names (now New South Wales Land and Housing Corporation) but have provided Graceades Community Cottage with our building for these past 37 years. Thank you so much. During this time, you have enabled Graceades Cottage to model what it is to be a good neighbour to the Bidwill community.

This is also the time to thank the many, many, people, organisations and businesses who donate money and goods to Graceades Cottage. We take great pride in making sure that these resources reach those who are “doing it tough”.

When I thank my staff for the wonderful work they do I include those who share their skills and talents:

Lynda who is our clever Ceramics Teacher
Elaine, our marvelous Quilter
Barbara our crafty Scrap-booker

Then as well there is Wendy, who is the very skillful and artistic Beader, sharing her gift with the students at Bidwill Campus, Chifley Collage and with HOOK'D UP primary school age kids at Noumea Primary School. Wendy brings out the very best in all participants, watching the kids blossom and grow over their time spent at these weekly programs. She shows such patience. Shylah has facilitated After School and School Holiday Activities throughout 2018. She is learning more from Ivanka every week.

Also the Free Food Friday team are a great asset, putting together the food hampers each week for Mt Druitt families. Great work thank-you! Our TAFE student placement volunteers have also played a vital role by manning Graceades Cottage inter-active stalls at events and the Bidwill Community Festival throughout the year. They gain valuable experience working for the community learning how to “Get things Done” under Ivanka’s watchful eyes.

MANAGER'S REPORT - Continued

2018-2019 – A Year of Slow Change on Many Fronts

The list of volunteer helpers here at Graceades Cottage is ever growing longer:

Ken, Andrew and Aquilla – contributing very practical help picking up and delivering household goods and even furniture to people in need from those who care and share.

Mathew bringing his diverse talents – his IT know how and his Chef's training. I am not sure which is appreciated most, may be it is his culinary skills enjoyed at lunch on Fridays!

Leonard – garden maintenance and lawn mowing of the Cottage grounds, saving us heaps of dollars and helping with many handyman duties as well. Thanks Lenny. Glen who is always there to lend a hand, especially on Wednesday Dinner Nights – couldn't do it without your help and Hamit who helps when he can. There are countless others who help out regularly and although I may not have room to name you all here, your efforts are appreciated.

Next I want to thank other Community Organisations and Agencies who partner with us to deliver Programs and Events right across Mt Druitt. It is great to be able to work with other like-minded workers who want the very best for Mt Druitt people.

If you are someone who likes statistics and numbers here are just a few:

- **Graceades Cottage Delivered:**
- **9 x Community Events**
- **5 x Community consultations**
- **23 x Community Dinner Nights**
- **10 x Youth Dinner Nights**
- **4 Terms x Weekly Kids After School Groups**
- **8 x School Holiday Activities**
- **5 x Craft and Social Groups x Weekly**
- **1 x Housing Forum**
- **2 x Youth Justice Conferencing Sessions**
- **Paid off State Debt Fines worth \$169,727.80**
- **138 x Work for the Dole Volunteers**
- **1600 x Free Food Friday hampers distributed**
- **Submitted 7 x Funding Applications – All unsuccessful**

We also have an application in the pipeline with Ed Husic's Building Stronger Communities (to replace Community computers). **We are hoping this will be successful!**

This amount of support to the Mt Druitt community would not be possible without the efforts of our amazing staff.

Ivanka – Words can not express the admiration and respect I have for Ivanka and the work she does. **I Just Love Her!**

Brenda – How could we all function without the calming, reliable influence that Brenda brings to her work? We can all have extreme confidence that the financial management of Graceades Cottage is overseen by such professionalism. **I Just Love Her too!**

MANAGER'S REPORT - Continued

2018-2019 – A Year of Slow Change on Many Fronts

Graceades Cottage Management Board Members – Such a wonderful bunch of people, concerned with the welfare of their local community. Each and every member brings first-hand knowledge and life skills to assist in the decision making processes throughout the year. As well as giving up time to take on Learning Opportunities as they arise, members are always there to give hands on help for the various events and programs we provide. **I want to take this opportunity to let everyone know how much I rely on their support. Thank you all!**

Rap 4 Change has continued to have office space and use of resources here at Graceades Cottage throughout 2018-2019. They are doing amazing work with at risk kids and also developing new sporting clubs. We thank them and are proud to support their work.

The coming Year: The incoming State Government has amalgamated Families and Community Services (which includes Housing NSW), with the Justice Department to form the **Department of Communities and Justice (DCJ)**. DCJ will now be our core funding body with new contracts to be rolled out ready for July 2020. We will be reporting through a new Federal Portal using the DEX system which was developed for the Department of Health.

This has required a great deal of training and meetings with our CPO. It will be interesting to see how it goes!

Graceades Cottage Garden: We look forward to Blacktown City Council removing the obstacles that have plagued the opening of this project. Please see Ivanka to register your interest in being part of this exciting new community space in your neighbourhood.

The Way Forward for Graceades Cottage: I have great confidence that Graceades Cottage will continue to receive core funding from the State Government in coming years, because the people we see each day are the very Target Group that the TEI Reform has identified as in need of support. We see this diverse Target Group of people every day. **Not just as clients, but also as volunteers, who help their communities wherever needed.**

Already in this new Financial Year we have welcomed new volunteers who are helping with the Work for the Dole Program – Computer Assistance – Student Placements.

This is the strength of the Mt Druitt community Graceades Cottage serves. This is why I look forward to working with you all again in the coming year.
Cheers

Patricia Formosa

Manager

Brenda Ranson
Administration/ Book Keeper.
I appreciate all your hard work, Thank You





GRACEADES COTTAGE

"Building Stronger Communities"

PRESIDENT'S REPORT 2019 Lynda Murphy –President



I would like to welcome you all and thank you for attending our 2019 AGM.

The cottage has had another busy and satisfying year. Without the help and support of many people we would not be able to achieve our goals. Thank you to our core funding body NSW Family and Community Services for their continued support. Also NSW FACS Housing for our building so we can provide for the community.

We are still waiting for the work to be approved for the garden project, but we are looking forward to the day we can hold events at the garden.

Thank you for the continued support of Specsavers, Edmond Attalla, Ed Husic, Marty–Bidwill Hotel and those who wish to remain anonymous, without them we would not be able to achieve goals.

I would like to thank Greater Love Ministry for the dinner night, which provide food and companionship to the community. The community would be at a great loss if OZ Harvest and Christ Mission Possible didn't provide us with food each week.

I have attended the 2018 Conference with Patricia and Ivanka and it is great to learn how others operate and see the esteem the cottage is held with other workers.

I attended Blacktown Council with Ivanka about the Bidwill festival which was another great success. Thank you Ivanka for all your hard work.

I would also like to thank all our staff and volunteers who deliver the Graceades Cottage group services and events. We could not exist without the work of our volunteers.

Also we would like to thank all the other organisations we work with who really help us to achieve.

Thank you to the volunteers who do food Fridays, cook barbeques, clean our cottage, pick up furniture and deliver to the community.

Thank you also to management Board who have ensured that the cottage is kept funded and working for the good of the community.

Thank you all and I hope that we have a great year ahead in helping to make people lives better.

Lynda Murphy

President

5th October 2019

To:

Ms Ivanka Pelikan

Graceades Community Cottage

2 Rose Court, Bidwill NSW 2770

Dear Ivanka,

I would like to express my sincere gratitude for the support that you and your team of staff at Graceades Community Cottage have shown to me over the past 3 years that I have joined with the lady's group on every Tuesday. I know that you and the team must put in a lot of effort to ensure that the facility runs smoothly, such as the meeting room, toilets and kitchen are always well presented, clean and maintained for all of us.

Personally, I like to come to Graceades Community Cottage because there is a strong sense of social purpose and support; being viable and environmentally responsible and fully accessible for all of us with disability access available to some of the ladies who definitely need it. I like to come along to support the ladies in the group, as some of them live alone and want some social interaction with others, the meeting on Tuesday serves that essential purpose and gives them an opportunity to connect with new people that come to join the group.

The regular meeting is important to all the members and gives everyone a chance to talk about their own problems and health matters. I have always been happy to cook some lunch for them to enjoy, which gives me an added purpose to come every Tuesday. It has turned out to be a highlight of their day!

I would like to say that the success of the Community meeting place at Graceades Community Cottage has only been achieved through your commitment to this Village and I would like to thank you and your team; and wish you continuing success for the future.

Warm Regards

A small, square, black and white photograph of a woman with short, dark, curly hair, smiling and resting her chin on her hand. This is part of a digital signature block.

Gunniga Forshaw



Shylah Clinch
TAFE Student
Youth Work Cert 4



My first day I remember it so clearly I had just heard Albert from Christ mission speak at one of my Tafe sessions and something had clicked and on a whim I came to Graceades where I had first met Ivanka and Wendy. They asked me to take a seat and asked me about my studies and why I chose to take the path of community work and they shared stories from their experiences and I immediately felt welcome.

After my first visit at Graceades I knew this was the place for me. When Ivanka asked me to help and run school holiday activities I was ecstatic I finally was doing something I loved.

The after school program is something that changes you, seeing the kids weekly playing sport, doing craft and hearing about their days at school, what they did on the weekend and just random stuff was rewarding and gave me a massive sense of fulfillment and I cannot thank the cottage enough for allowing me to be a part of the team.

If volunteering here has taught me anything, it is that you can be on top of the world one day and rock bottom the next and as a community worker, you need to be prepared for anything.

Once again I'd just like to thank Patricia, Ivanka, Brenda and the management committee for the opportunity.

Matt Ingram



Hi I'm Matt and I started at Graceades Cottage about 8 months ago doing work for the dole and even though I have finished working for the dole I still continue to come to Graceades as a volunteer

I love Graceades Cottage it is one of the truly helpful places I have ever been to. While attending the cottage it has given me such an amazing experience of meeting new people and volunteering in the community.

I have a passion for cooking and making people smile, which is why I enjoy helping cook the BBQ on Fridays which provides lunch for the men's shed and the volunteer ladies who pack the food hampers for the community who also like to come and join us for lunch.

I also help in the office when needed and I also like to hang around and help Ivanka with anything that she may need.

Often when I come to Graceades Cottage I have a sense of pride and it only comes from the respect gained from the management and other workers and volunteers I encounter while I am here.

I greatly appreciate everything that Ivanka and the management have done to help me while I have been here at Graceades.

I have gained casual employment and I will still continue to travel on my days off and help however I can.

IVANKA!!

**A selfless person that is what you are
A hero in our eyes and we see you cry
Holding us together keeping your head up high
Because it isn't just one person it's all of our lives**

**We respect and care about you as you respect and care about us
And I can't think of a better person to inspire our youth
Often I see you and I am amazed
On how you keep going each day**

**You look tired sore and in a world of stress
But Ivanka you keep doing your best
You deserve to hold your head up high
And without you so many wouldn't have a life**

**You saved me you helped me when I was down
So please Ivanka this is my vow
From the everyday to the moment we part
I shall hold you close to my heart
You inspired me you brought me back**

**From a dark place that I cant ever go Whack
So when I say this I mean it in every way
Ivanka I'm glad I meet you I know all of us are
And I am sure I speak from the bottom of all of our hearts**

**When I say we are proud to know you
And the gifts we gain not all are physical
Many are just a chat when we needed to
We all just want to say**

Thank you for everything you have done for us all

We greatly appreciate it and this is how we all show it

Written By Matthew Ingram.



Thanks from Ivanka 2018-2019 Annual General Meeting!

I have many people to thank for the success of another year at Graceades Cottage.

It has been a busy year with programs, activities, events!

The construction of the Cottage Garden!

Firstly, I want to thank from the bottom of my heart!

My manager Patricia Formosa, for supporting me and letting me be the worker I am today,
I have you to thank for your guidance.

Brenda Ransom you are a beautiful human being and I appreciate all you do for me.

The management committee Lynda, Kaye, Elaine, Barbara, Julie, Leanne, and Carol
for giving up your time and supporting the cottage and the community
by being on the management committee.

Wendy for your Beading expertise for the program Bidwill Beading at Bidwill High School and for the
Hook'D UP program at Noumea Public School.

Tanya Ghosn - Volunteer—I appreciate and thank you for your dedication.

Shyalah Clinch – TAFE Student – School Holiday Programs and Dinner Nights.

Hamit Temur, Leonard Henshaw for all your Help!

NED - Rap 4 Change your support with events and sharing the building with us, love that you are here!

Anne Skewes, Catrina Kim, Rocco Esposito, Justine Mitchell NSW Land and Housing Corporation thank
you for your support throughout the year, I am extremely grateful for all your hard work for the
community and the support I have received.

John Che – BroadSpectrum thanks for your support with maintenance for the community.

Ken Cartwright for picking up donations, delivering hampers to the elderly all while you have your own
health issues. A fine man you are!

Peter your IT expertise! Keeping us up to date with the outside world of technology!

Lynda Murphy thank you for all your support, attending conferences what would I do without you?

Julie ,Leanne and Barbara your dedication preparing food hampers on a weekly basis and
volunteers who help out with food hampers.

I am truly blessed to have you working with me!

Thanks from Ivanka

Thanks to all who work with the cottage!

Oz Harvest - Food Donations for Weekly Hampers
Albert - Christ Mission Possible –Food Donations for Weekly Hampers
Dave - Living Bread Ministries for Fortnightly Dinners

Awesome Handyman - Sammy for Donations
SpecSavers Plumpton - Donations

Marty Secheny - Bidwill Hotel
Ed Husic - MP Federal Member for Chifley
Edmond Atalla – MP State Member for Mt Druitt
Mt Druitt TAFE students for their enthusiasm and fresh ideas

Debbie Higgison - Education Project Officer – Solid Ground Program
this is an initiative between Carriage Works and Blacktown Arts Centre.
Love your work you are a special person in my life!

Productivity Bootcamp - Rebecca and Crew

Bidwill High Chifley Campus - Bidwill Beading
Noumea Public School Hook'd Up

Blacktown City Council – Bidwill Festival

Maria Bozikis - Mission Australia

A special thanks to Sarina Rosso partnership for the Work 4 dole program.
Thanks to all participants who have attended the program.
Graceades Cottage is truly blessed with all the participants and the hard work that is
contributed while attending their hours at the cottage.

Thanks to all who donate items such as clothing, furniture, bric a brac, toys etc for us to
distribute to the community your generosity means a great deal to the cottage and the
community! A special mention to Sandy for organising donations for the community.

**I would like to thank all the volunteers who have helped make it such a successful year.
We are a great TEAM**

**Patricia, Brenda, and Management Committee thank you for all the support!
.... And for putting up with me for another YEAR!**

GOD BLESS!

CERAMICS

Ceramics is a great way to relax and to create an art piece they can treasure or give as gifts

Mondays brings ladies together to chat, have a cuppa, cake and exchange ideas.

As I love to help people, I take great pride in watching them create art pieces and if they require my skills in ceramics painting I am happy to help out.

The Ceramics group brings many community members together, which not only brings new ideas but also forms friendships.



Lynda Murphy



CHAT AND CRAFTS

I like to come to Graceades Cottage because I get to meet people my age and I have made a lot of friends and it gives me a chance to get out of the house. We talk about our families and there is always something to learn. – Marie Lattimer

I was feeling lonely, isolated and in need of the company of like-minded people. I joined the group in 2014, we share stories, gossip, topics, food, laughter and outings. I now have balance in my life and new friends. – Caroline

Graceades Cottage Tuesday group is important to me for the friendships made and continuing. The sharing of our life experiences and families also for the fun and laughter we share. Thank you for this special community facility. – Jill Eddy

I have been attending the cottage on Tuesday afternoon for approximately four years. I have found the friendships I have made with the other woman and the support I have received from Ivanka has been most appreciated. I enjoy meeting with our group immensely. I hope that this cottage will be able to continue to offer the ongoing support that it has given to the community and to all of us girls. – Ruth. H

I really enjoy going to Graceades Cottage on Tuesdays for coffee and craft. The ladies are lovely and so are the staff and volunteers. It's a lovely cottage and everyone enjoys helping each other and sharing skills and knowledge and resources. We really need this cottage to continue running as it's a place for forming friendships which is important for older woman who are often lonely and bereaved and we find support and help and keeping our minds and hands busy continuing traditional craft skills to remember and teach younger people. They also provide excellent services for many other members of the community and I think it should be expanded if possible. – Sharon

I love coming to my Tuesday group at Graceades because I have met a group of lovely ladies who have become friends for life. And we do a lot of activities and talk about a lot of topics. Thank you Graceades. –Helen King

My name is Brenda Martin and I have been coming to Graceades Cottage for many years. When I first started coming to Graceades I was only slightly disabled but now I am very disabled with arthritis but I still make the effort to come here otherwise I would be at home 24/7. It's really good to catch up with old friends and to meet new people.
– Brenda Martin





Elaine Parker

QUILTING

Hi I'm Elaine and I run the quilting classes every Thursday 10am to 1.30pm.

We start with a cuppa and a chat.

The ladies are always keen to try new designs, which I help to create.

They usually work on their own creations, but sometimes we come together with the same projects which is very exciting to see the different effects as they use their own materials.

We share ideas and it's a great way to make special things or gifts.

Anyone is welcome to join us.

- Elaine, Quilting teacher.





SCRAPBOOKING & CARD MAKING

Barbara Hopkinson

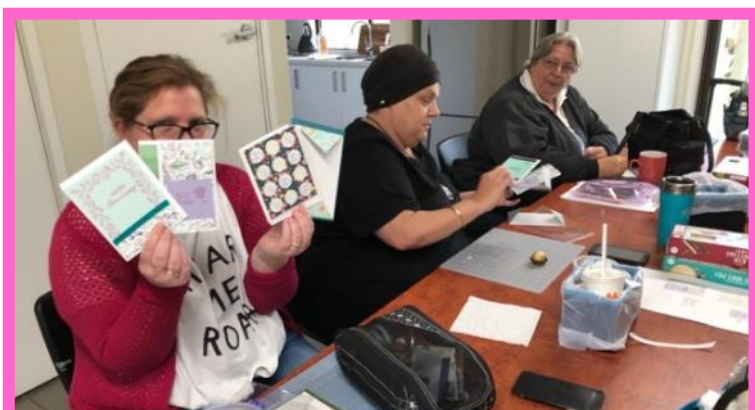
Barbara's Scrapbooking and Card making.

Scrapbooking is on the 2nd Saturday each month with an average of 6 to 8 ladies in attendance. The ladies have a great time planning and making some wonderful memories for their family albums as well as enjoying each other's company and advice.

On the 3rd Saturday of the month 10 to 12 ladies are enjoying making their own personalized cards, anything from Birthday, Sympathy or just "How are You" cards.

In November we will be having a Card Buffett with lots of Christmas cards being made in preparation for the Holiday Season.

For further information on either of these 2 events or for holding a fun gathering for you and a few friends in your own home please contact Barbara on 0402 246 337.



Men's Group

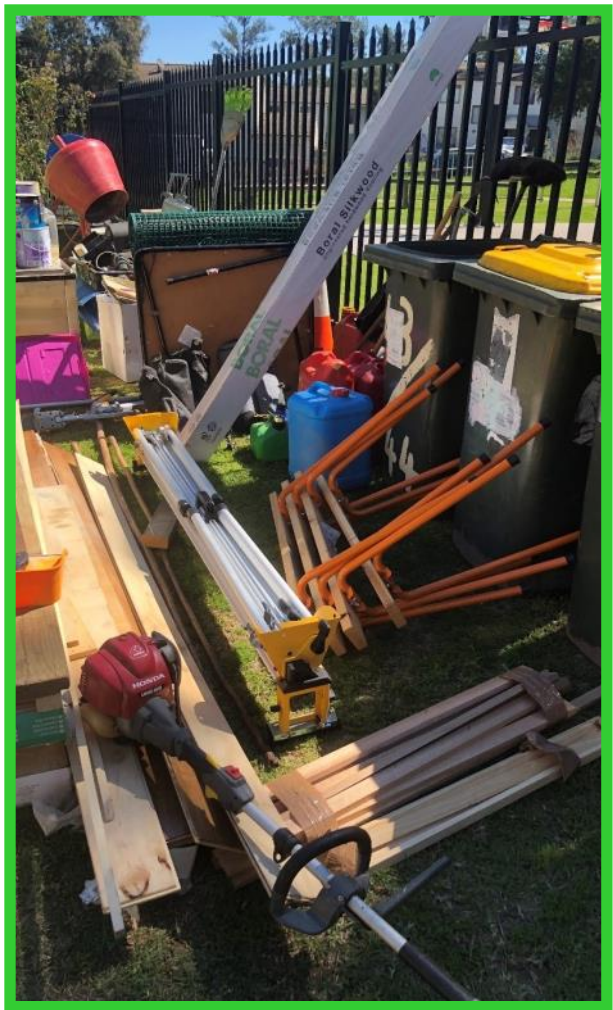
The Men's Group meet on Friday's at the cottage, for the last 2 years.

The Men help out the local residents by doing the lawns, weeding the gardens and any odd jobs that is required.

At the Graceades Cottage and Cottage Gardens they maintain the lawns, the gardens, pickup and deliver donated items of furniture.

The men take turns to cook the Barbecue and setup for them to sit and eat meals together. This brings the men together and build connections whilst they chat to one another.

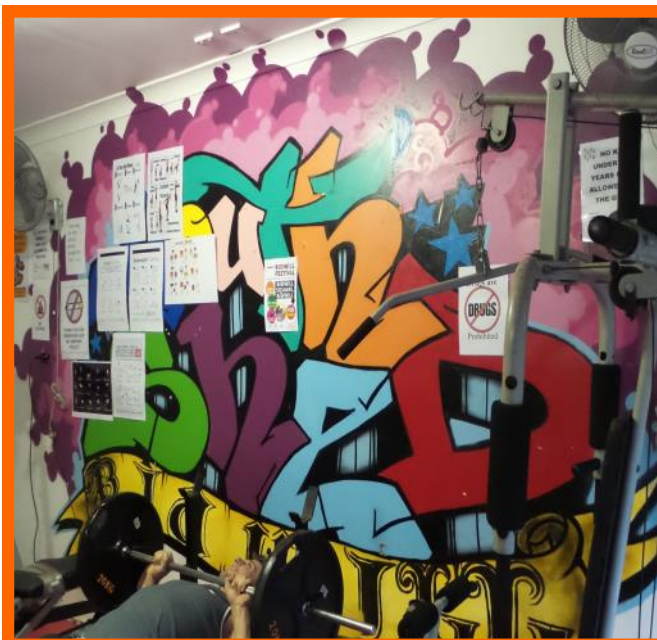
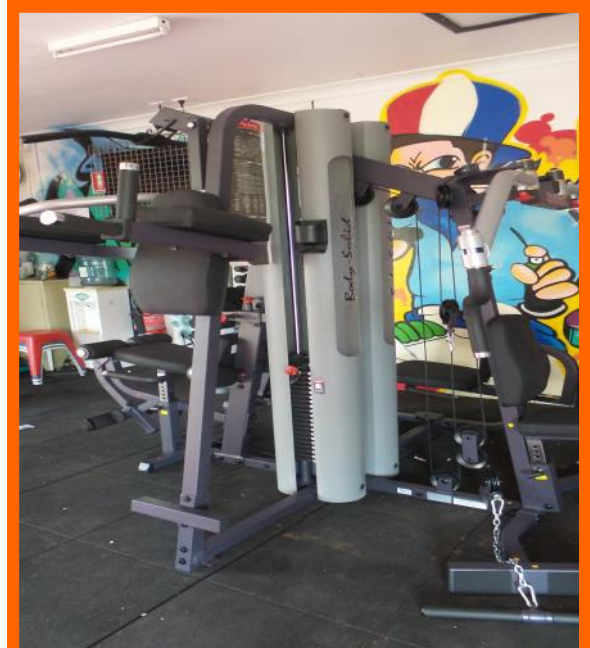
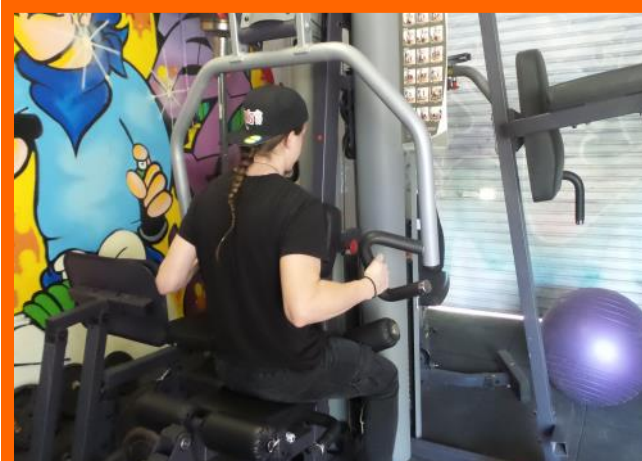
Working Development Orders has been a great focus for the men to pay their fines whilst they attend the Men's Program.



YOUTHSHED

Youth and Adults from the local area enjoy training in the YouthShed-GYM. They are in a safe environment to get together and socialise while also exercising and utilising the fantastic facilities that the YouthShed-GYM hold. Those that attend the gym understand the policy of “neutral ground” that is in place and show this by respecting one another.

This training will help them achieve a healthy mind and healthy body. Disadvantaged, at risk young people have limited opportunities to engage in otherwise costly fitness programs. These young people are often early school leavers, unemployed and at risk of homelessness.





Wendy Howard

BEADING

Bidwill High School

It was another fantastic year with the Bidwill High School beading program. This year I would like to mention our dedicated students that have been attending every Thursday afternoon to make and create their beautiful pieces of jewellery and gifts for themselves or to share amongst family and friends.

This year has been an eye opener to me. I realized how much this means to the students. I have realized that the beading program is not just about beading but how much the fact of creating something, it can also mend and make a change.

I have personally seen the confidence grow every week, they open up and talk. We have group discussions and if so one on one's. The student's self esteem has improved and their skills of beading. The students have learnt to trust us and the group together and feel comfortable. The respect level is outstanding from these students and the same respect is given back.

There are helpers that have been coming every week and all year that are a great help with the new ones, helping them start and welcoming them. It is also fantastic to see the boys come along and show as much enjoyment as the girls.

This doesn't happen without Ivanka as well, we work well together. We are very proud of our Bidwill High beading program.

It means a lot to me to see this program always continue to do the amazing breakthrough it does with the students.

The students are going to be very busy in the next four weeks making Christmas presents, decorations and gifts for their family and friends.

Looking forward to next year.

-Wendy Howard



HOOK'D UP Noumea Public School

HOOK'D UP Program is delivered at Noumea Public School in Shalvey. Participants are children from early and middle years who may be having difficulties with their school learning due to conditions such as anxiety, bi-polar, ODD, ADHD, OCD and children at various stages of the Autism spectrum.

The HOOK'D UP Program has enabled these children to re-connect with their school communities and re-ignite their "Life-long love of Learning". Using fun sessions of craft or sporting activities, with a strong personal development component, teaching positive core values such as Trust, Honesty, Respect, Integrity, Responsibility, Compassion, Fairness, Self- Discipline, Perseverance and Citizenship. These lessons spill out in to participants' home and school lives improving social skills and self-confidence/self-esteem.

Thankyou to Wendy Howard for organizing the activities on a weekly basis.

We would like to thank Noumea Public School for the use of their facilities.



CHRIST MISSION POSSIBLE AND OZHARVEST

Christ Mission Possible and OzHarvest thank you for your donations of food. The community greatly appreciates your donations. Volunteers sort and make up the hampers which are donated to the community.

Leanne, Julie, Barbara and the volunteer's thank you all for your hard work it truly is amazing how you all work together putting the hampers together. The community appreciates all your hard work Leanne, Julie and Barbara.



FOOD VAN

Food Van is a night organised and run by local church organisation Living Bread Ministries with the food cooked and donated by Christ Mission Possible Kingswood.

David Eco and his smiling group of volunteers open the night with a small prayer before dinner is then served to the community who sit down and have a chat while eating, after dinner everyone gathers around for a hamper to take home.

The community is extremely grateful for the delicious food that is served and a chance to sit and make new friends.



TAG 4 TRUST

18th July 2018

A successful event once again for the Children and families of Mt Druitt and Surrounding Suburbs. Tag 4 Trust was organized in partnership with Rap 4 Change, Graceades Community Cottage, Blacktown City Council, The Hive, Jesuit Social Services, NSW Police Force, NSW Fire and Rescue and NSW Ambulance. The main purpose of Tag 4 Trust was to break the stigma and barriers between Police Force, Fire Brigade and Ambulance workers. Once again the participants were given medals. Thank you to referees who donated their time. Cannot wait till the next Tag 4 Trust.



Mini					Modis					International				
W	D	L	T	Total	W	D	L	T	Total	W	D	L	T	Total
1	1	1	1	4	1	1	1	1	4	1	1	1	1	4
2	2	2	2	8	2	2	2	2	8	2	2	2	2	8
3	3	3	3	12	3	3	3	3	12	3	3	3	3	12
4	4	4	4	16	4	4	4	4	16	4	4	4	4	16
5	5	5	5	20	5	5	5	5	20	5	5	5	5	20
6	6	6	6	24	6	6	6	6	24	6	6	6	6	24
7	7	7	7	28	7	7	7	7	28	7	7	7	7	28
8	8	8	8	32	8	8	8	8	32	8	8	8	8	32
9	9	9	9	36	9	9	9	9	36	9	9	9	9	36
10	10	10	10	40	10	10	10	10	40	10	10	10	10	40
11	11	11	11	44	11	11	11	11	44	11	11	11	11	44
12	12	12	12	48	12	12	12	12	48	12	12	12	12	48
13	13	13	13	52	13	13	13	13	52	13	13	13	13	52
14	14	14	14	56	14	14	14	14	56	14	14	14	14	56
15	15	15	15	60	15	15	15	15	60	15	15	15	15	60



TAG 4 TRUST

18th July 2018



BIDWILL FESTIVAL

Saturday 15th September 2018

What a great day everyone had at the Bidwill Festival, the sun was shining and there were lots to see and do. There was lots of entertainment throughout the day for all ages, as well as lots of yummy food and a variety of stores to explore. Students from Mt Druitt TAFE set up different activities for the children including craft, painting nails and hair braiding.

The ongoing success of the Bidwill Festival is due to the ongoing support of community Residents, Blacktown City Council and local community services all working together .

A big thank you to everyone who came to the festival, had a stall and volunteered their time, we wouldn't be able to have the festival without you all.



BIDWILL FESTIVAL

15th September 2018



Mental Health Month

2nd October 2018

Event held at Graceades Cottage in
Partnership with TAFE Students studying
Alcohol and other drugs



Neighbourhood Christmas Party

21st December 2018

The kids in the community attended the neighbourhood Christmas Party. There were sporting activities, Christmas craft activities, BBQ and Ice Cream. Rap 4 Change had everyone up on their feet dancing, singing, rapping etc. The day was a success there was an activity to suite young and old. Christmas gifts for all.



Australia's Biggest Morning Tea

22nd MAY 2019

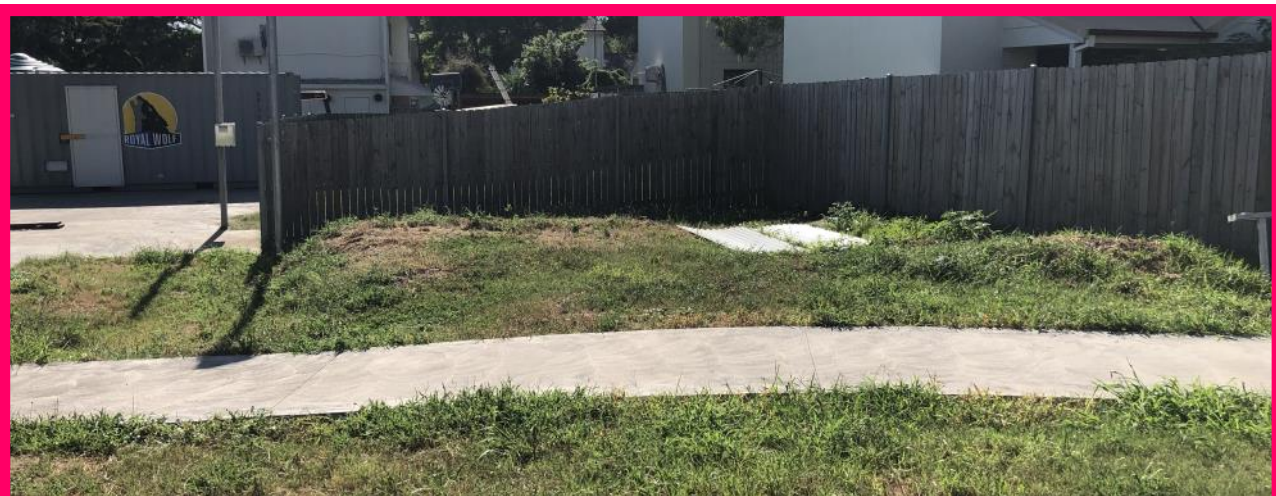
This is our fourth year hosting Australia's Biggest Morning tea here at Graceades, which again was a huge success. There was lots of yummy food for everyone to enjoy, as well as a raffle and lucky door prizes with wonderful gifts to be won. Everyone gave a gold coin donation and all funds raise go to the Cancer council which will help the fight against cancer which hopefully one day they will find a cure for this disease that takes too many of our loved ones.



Cottage Garden Project



**Delivery of Shipping Container
11th November 2018
Funding Provided By Ed Husic
Stronger Communities Program Grant**



**Watch this space once approval is granted by
Blacktown City Council
Nalla Building will be delivered and erected**

The Year It Was



**Noumea Supported Playgroup
partnership with Mission Australia
Communities For Children**



The Year It Was



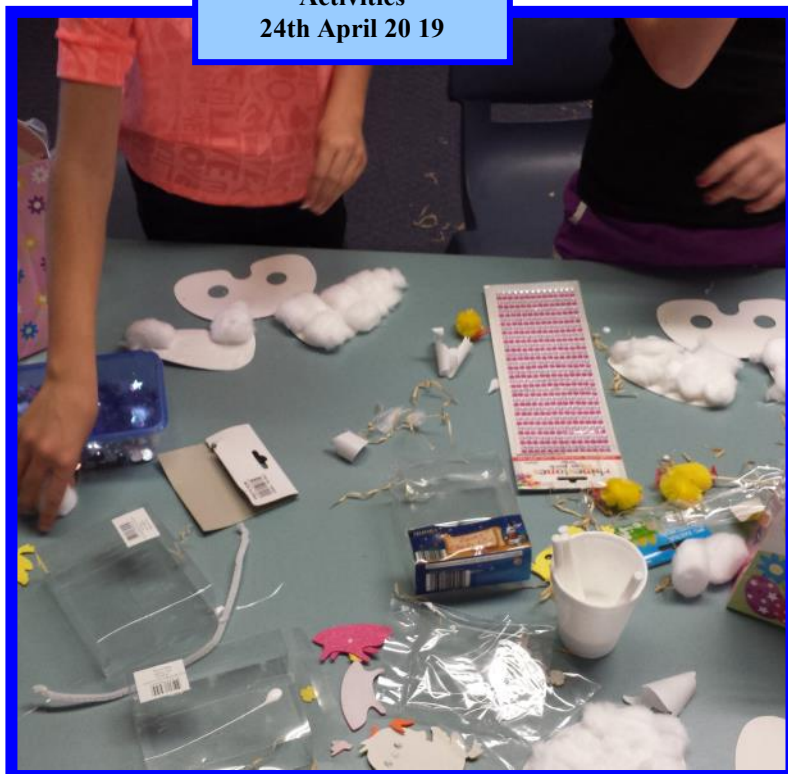
**Biggest Morning Tea
22nd May 2019**



**Easter School Holiday
Activities
24th April 2019**



**Easter School Holiday
Activities
17th April 2019**



The Year It Was



**Rooby Roo Book Launch
“Book about Book” (Darug/English Version)
24th August 2019**

Partnership Program with BACC, Mission Australia, Graceades Cottage

Happy Birthday Rooby Roo



The Year It Was....



**Women's Multicultural
Christmas Luncheon
13th December 2018**



The Year It Was



The Year It Was



**Biggest Morning Tea
22nd May 2019**



**Aboriginal Art Program
Andrew King**

GRACERDES COTTAGE

GRACEADES COMMUNITY COTTAGE INCORPORATED
ABN 26 134 480 262

FINANCIAL REPORT
FOR THE YEAR ENDED
30 JUNE 2019

**Liability limited by a scheme approved under
Professional Standards Legislation**

GRACEADES COMMUNITY COTTAGE INCORPORATED
ABN 26 134 480 262

CONTENTS

Income Statement	1
Balance Sheet	2
Notes to the Financial Statements	3
Statement by Members of the Committee	7
Auditors' Report	8
Compilation Report	10
Job Income and Expenditure Statement	14

GRACEADES COMMUNITY COTTAGE INCORPORATED

ABN 26 134 480 262

INCOME STATEMENT FOR THE YEAR ENDED 30 JUNE 2019

	Note	2019 \$	2018 \$
Income			
Grants		257,796.98	264,470.12
Other income		1,972.99	1,432.16
		<u>259,769.97</u>	<u>265,902.28</u>
Expenditure			
Program costs		(24,740.54)	(16,368.69)
Auditors' remuneration		(3,000.00)	(3,000.00)
Depreciation expenses		(1,799.00)	(562.00)
Employment expenses		(186,018.18)	(170,621.41)
Other expenses		(45,737.60)	(89,540.38)
		<u>(1,525.35)</u>	<u>(14,190.20)</u>
Loss for the year		<u>(1,525.35)</u>	<u>(14,190.20)</u>
Retained earnings at the beginning of the financial year		38,839.54	33,520.20
Funds from Liability Account		580.98	21,471.26
Surplus Funds C/Forward		(427.27)	(7,441.92)
Transfer From Reserves		-	5,480.20
Profit		<u>37,467.90</u>	<u>38,839.54</u>

GRACEADES COMMUNITY COTTAGE INCORPORATED

ABN 26 134 480 262

BALANCE SHEET AS AT 30 JUNE 2019

	Note	2019 \$	2018 \$
ASSETS			
CURRENT ASSETS			
Cash and cash equivalents	3	167,281.79	147,202.64
Accounts receivable and other debtors	4	294.57	-
TOTAL CURRENT ASSETS		<u>167,576.36</u>	<u>147,202.64</u>
NON-CURRENT ASSETS			
Property, plant and equipment	5	5,117.64	6,916.64
TOTAL NON-CURRENT ASSETS		<u>5,117.64</u>	<u>6,916.64</u>
TOTAL ASSETS		<u>172,694.00</u>	<u>154,119.28</u>
LIABILITIES			
CURRENT LIABILITIES			
Accounts Payable and Other Payables	6	13,052.83	1,480.00
Provisions	7	4,199.60	4,199.60
Employees entitlements	8	15,331.79	20,674.54
Other current liabilities	9	70,983.41	63,176.10
TOTAL CURRENT LIABILITIES		<u>103,567.63</u>	<u>89,530.24</u>
NON-CURRENT LIABILITIES			
Employees entitlements	7	31,658.47	25,749.50
TOTAL NON-CURRENT LIABILITIES		<u>31,658.47</u>	<u>25,749.50</u>
TOTAL LIABILITIES		<u>135,226.10</u>	<u>115,279.74</u>
NET ASSETS		<u>37,467.90</u>	<u>38,839.54</u>
EQUITY			
Retained earnings	10	37,467.90	38,839.54
TOTAL EQUITY		<u>37,467.90</u>	<u>38,839.54</u>

NOTES TO THE FINANCIAL STATEMENTS FOR THE YEAR ENDED 30 JUNE 2019

The financial statements cover Graceades Community Cottage Incorporated as an individual entity. Graceades Community Cottage Incorporated is a not for profit Association incorporated in New South Wales under the Associations Incorporation Act 2009.

The functional and presentation currency of Graceades Community Cottage Incorporated is Australian dollars.

Comparatives are consistent with prior years, unless otherwise stated.

1 Basis of Preparation

In the opinion of the Committee of Management, the Association is not a reporting entity since there are unlikely to exist users of the financial report who are not able to command the preparation of reports tailored so as to satisfy specifically all of their information needs. These special purpose financial statements have been prepared to meet the reporting requirements of the Act.

The financial statements have been prepared in accordance with the recognition and measurement requirements of the Australian Accounting Standards and Accounting Interpretations, and the disclosure requirements of AASB 101 Presentation of Financial Statements, AASB 107 Statement of Cash Flows, AASB 108 Accounting Policies, Changes in Accounting Estimates and Errors and AASB 1054 Australian Additional Disclosures.

The financial statements have been prepared on an accruals basis and are based on historical costs modified, where applicable, by the measurement at fair value of selected non current assets, financial assets and financial liabilities.

Significant accounting policies adopted in the preparation of these financial statements are presented below and are consistent with prior reporting periods unless otherwise stated.

The following significant accounting policies, which are consistent with the previous period unless stated otherwise, have been adopted in the preparation of this financial report.

2 Summary of Significant Accounting Policies

Income Tax

The association being a non-profit community service organisation, has been granted an exemption from income tax.

Plant and Equipment

Each class of property, plant and equipment is carried at cost or fair value less, where applicable, any accumulated depreciation and impairment.

Depreciation

The depreciable amount of all plant and equipment is depreciated over the useful lives of the assets to the association commencing from the time the asset is held ready for use.

Cash and Cash Equivalents

Cash and cash equivalents comprises cash on hand, demand deposits and short term investments which are readily convertible to known amounts of cash and which are subject to an insignificant risk of change in value.

Employee Benefits

Provision is made for the association's liability for employee benefits arising from services rendered by employees to the end of the reporting period. Employee benefits that are expected to be wholly settled within one year have been measured at the amounts expected to be paid when the liability is settled.

Employee benefits expected to be settled more than one year after the end of the reporting period have been measured at the present value of the estimated future cash outflows to be made for those benefits. In determining the liability, consideration is given to employee wage increases and the probability that the employee may satisfy vesting requirements. Cashflows are discounted using market yields on high quality corporate bond rates incorporating bonds rated AAA or AA by credit agencies, with terms to maturity that match the expected timing of cash flows. Changes in the measurement of the liability are recognised in profit or loss.

Provisions

Provisions are recognised when the association has a legal or constructive obligation, as a result of past events, for which it is probable that an outflow of economic benefits will result and that outflow can be reliably measured.

Goods and Services Tax (GST)

Revenues, expenses and assets are recognised net of the amount of GST, except where the amount of GST incurred is not recoverable from the Australian Tax Office. In these circumstances the GST is recognised as part of the cost of acquisition of the asset or as part of an item of the expense. Receivables and payables in the balance sheet are shown inclusive of GST.

	2019 \$	2018 \$
3 Cash and Cash Equivalents		
Cash on Hand	300.00	300.00
CBA - Cheque Account	17,926.82	14,690.63
CBA - Business Online Saver	149,054.97	132,212.01
	<u>167,281.79</u>	<u>147,202.64</u>
4 Trade and Other Receivables		
Current		
Work for Dole Program	<u>294.57</u>	<u>-</u>
5 Property, plant and equipment		
Plant & Equipment - at cost	6,713.64	6,713.64
Less: Accumulated Depreciation	<u>(6,519.00)</u>	<u>(6,470.00)</u>
	<u>194.64</u>	<u>243.64</u>
Office Equipment - at cost	20,001.00	20,001.00
Less: Accumulated Depreciation	<u>(15,078.00)</u>	<u>(13,328.00)</u>
	<u>4,923.00</u>	<u>6,673.00</u>
Total Plant and Equipment	<u>5,117.64</u>	<u>6,916.64</u>
Total Property, Plant and Equipment	<u>5,117.64</u>	<u>6,916.64</u>
6 Accounts Payable and Other Payables		
Current		
Accounts Payable	10,410.00	-
Superannuation Payable	1,162.83	-
Audit Fees Accrued	<u>1,480.00</u>	<u>1,480.00</u>
	<u>13,052.83</u>	<u>1,480.00</u>
7 Provisions		
Current		
Provision for Equipment Replacement	1,000.00	1,000.00
Provision for Refurbishment	1,000.00	1,000.00
Provision for Rent/Relocation	<u>2,199.60</u>	<u>2,199.60</u>
	<u>4,199.60</u>	<u>4,199.60</u>

	2019 \$	2018 \$
8 Employee Entitlements		
Liabilities		
Current		
Provision for Holiday Pay	<u>15,331.79</u>	<u>20,674.54</u>
Non-current		
Provision for Long Service Leave	<u>31,658.47</u>	<u>25,749.50</u>
9 Other Liabilities		
Current		
Insurance Claim	1,775.41	1,775.41
Work for Dole Program	-	4,847.73
Donation Rotary Club	237.69	-
Cottage Membership	8.80	-
Graceades Garden	9,131.66	18,028.95
Bidwill Festival	427.27	259.09
Donations - Spec Savers	1,095.76	297.76
B.R.A.G. Funding	3,232.15	7,073.06
Garden Kitchen Shed	31,766.00	-
Uniting (NSW ACT)	64.93	458.42
DSS Strength Comm Grant	313.46	2,211.64
Graceades Org Future Projects	1,677.94	3,165.26
Bootcamp Administration	19,808.49	23,614.93
Tag 4 Trust	<u>1,443.85</u>	<u>1,443.85</u>
	<u>70,983.41</u>	<u>63,176.10</u>
10 Retained Earnings		
Retained earnings at the beginning of the financial year	38,839.54	33,520.20
Net deficit attributable to the association	(1,371.64)	(160.86)
Transfer From Reserves	-	5,480.20
Retained earnings at the end of the financial year	<u>37,467.90</u>	<u>38,839.54</u>

STATEMENT BY MEMBERS OF THE COMMITTEE

The committee has determined that the association is not a reporting entity and that this special purpose financial report should be prepared in accordance with the accounting policies outlined in Note 1 to the financial statements.

In the opinion of the committee the financial report as set out on pages 1 to 8:

1. Presents a true and fair view of the financial position of Graceades Community Cottage Incorporated as at 30 June 2019 and its performance for the year ended on that date,
2. At the date of this statement, there are reasonable grounds to believe that Graceades Community Cottage Incorporated will be able to pay its debts as and when they fall due.

This statement is made in accordance with a resolution of the Committee and is signed for and on behalf of the Committee by:

Committee
Member: Lynda Murphy
Lynda Murphy (President)

Committee
Member: Barbara Hopkinson
Barbara Hopkinson (Treasurer)

Dated this 10 day of September 2019

Report on the Audit of the Financial Report

Opinion

We have audited the accompanying financial report, being a special purpose financial report, of Graceades Community Cottage Incorporated (the association), which comprises the balance sheet as at 30 June 2019, and the income and expenditure statement for the year then ended, and notes to the financial statements including a summary of significant accounting policies and other explanatory information, and the statement by members of the committee.

In our opinion, the accompanying financial report of the association for the year ended 30 June 2019 is prepared, in all material respects, in accordance with the Associations Incorporation Act 2009.

Basis for Opinion

We conducted our audit in accordance with Australian Auditing Standards. Our responsibilities under those standards are further described in the Auditors' Responsibilities for the Audit of the Financial Report section of our report. We are independent of the association in accordance with the auditor Independence requirements of the ethical requirements of the Accounting Professional and Ethical Standards Board's APES 110 Code of Ethics for Professional Accountants (the code) that are relevant to our audit of the financial report in Australia. We have also fulfilled our other ethical responsibilities in accordance with the code.

We believe that the audit evidence we have obtained is sufficient and appropriate to provide a basis for our opinion.

Emphasis of Matter- Basis of Accounting

We draw attention to note 1 to the financial report, which describes the basis of accounting. The financial report is prepared to assist the association in fulfilling the committee's financial reporting requirements under the Associations Incorporation Act NSW. As a result, the financial report may not be suitable for another purpose. Our report is intended solely for the association and should not be distributed to or used by parties other than the association. Our opinion is not modified in respect to this matter.

Responsibilities of Management and those Charged with Governance

Management is responsible for the preparation and fair presentation of the financial report in accordance with the Associations Incorporation Act 2009 and for such internal control as management determines is necessary to enable the preparation of the financial report is free from material misstatement, whether due to fraud or error.

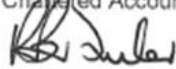
In preparing the financial report, management is responsible for assessing the association's ability to continue as a going concern, disclosing, as applicable, matters related to going concern and using the going concern basis of accounting unless management either intends to liquidate the association or to cease operations, or has no realistic alternative but to do so.

Those charged with governance are responsible for overseeing the association's financial reporting process.

**INDEPENDENT AUDITOR'S REPORT
TO THE MEMBERS OF
GRACEADES COMMUNITY COTTAGE INCORPORATED
ABN 26 134 480 262**

Auditors' Responsibility for the Audit of the Financial Report

Our objectives are to obtain reasonable assurance about whether the financial report as a whole is free from material misstatement, whether due to fraud or error, and to issue an auditors' report that includes our opinion. Reasonable assurance is a high level of assurance, but is not a guarantee that an audit conducted in accordance with the Australian Auditing Standards will always detect a material misstatement when it exists. Misstatements can arise from fraud or error and are considered material if, individually or in the aggregate, they could reasonably be expected to influence the economic decisions of users taken on the basis of this financial report.

Name of Firm: Ross Fowler & Co
Chartered Accountants

R B Fowler FCA
Registered Company Auditor 01810

Address: 11 Tindale Street Penrith NSW 2750

Dated this 6th day of September 2019



Chartered Accountants and Business Advisors
Ross Fowler B.Comm. FCA ABN | 96 769 893 959

**COMPILATION REPORT
TO GRACEADES COMMUNITY COTTAGE INCORPORATED
ABN 26 134 480 262**

We have compiled the accompanying special purpose income and expenditure statements of Graceades Community Cottage Incorporated for the year ended 30 June 2019 as set out on pages 11 to 33.

The responsibility of the committee of management

The Committee of Management of Graceades Community Cottage Incorporated is solely responsible for the information contained in the special purpose financial statements, the reliability, accuracy and completeness of the information and for the determination that the basis of accounting used is appropriate to meet their needs and for the purpose that the financial statements were prepared.

Our responsibility

On the basis of the information provided by the committee of management we have compiled the accompanying special purpose financial statements in accordance with the basis of accounting as described in the notes to the financial statements and APES 315: Compilation of Financial Information.

We have applied professional expertise in accounting and financial reporting to compile these financial statements in accordance with the basis of accounting described in the notes to the financial statements. We have complied with the relevant ethical requirements of APES 110 Code of Ethics for Professional Accountants.

Assurance Disclaimer

Since a compilation engagement is not an assurance engagement, we are not required to verify the reliability, accuracy or completeness of the information provided to us by management to compile these financial statements. Accordingly, we do not express an audit opinion or a review conclusion on these financial statements.

The special purpose financial statements were compiled exclusively for the benefit of the committee of management who are responsible for the reliability, accuracy and completeness of the information used to compile them. We do not accept responsibility to any other person for the contents of the special purpose financial statements.

Name of Firm: Ross Fowler & Co
Chartered Accountants

R B Fowler

Address: 11 Tindale Street Penrith NSW 2750

Dated this 6th **day of** September **2019**

11 Tindale Street Penrith NSW 2750
PO Box 860 Penrith NSW 2751

Tel | 02 4722 3066
Fax | 02 4722 3077

Email | penrith@rossfowler.com.au
Web | www.rossfowler.com.au



**JOB INCOME AND EXPENDITURE STATEMENT
FOR THE YEAR ENDED 30 JUNE 2019**

	2019 \$	2018 \$
COTTAGE (118)		
INCOME		
Work 4 Dole Funds	4,050.00	-
Grants - FACS	215,320.80	208,395.10
Interest Received	232.38	583.64
Membership Fees	13.27	-
Reimbursement Fees	345.40	22.80
	219,961.85	209,001.54
EXPENSES		
Activity Expenses - Food & Materials	8,943.76	3,972.63
Audit Fees	3,000.00	3,000.00
Bank Charges	177.77	285.72
Cleaning & Gardening	2,034.43	2,174.48
Conferences & Seminars	5,296.39	2,330.78
Building & Construction	120.00	-
Computer Software & Requisites	201.13	4,354.30
Depreciation	1,799.00	562.00
Donations & Gifts	534.22	352.04
Electricity & Water	3,217.57	3,158.55
Equipment & Furniture Purchases (Small Items)	2,450.22	2,041.19
Facilitator Fees	2,940.08	1,560.00
Hire Fees	136.81	-
Holiday Leave	(5,342.75)	3,754.90
Insurance	3,731.45	3,569.98
Long Service Leave	5,908.97	2,261.65
Management Expenses	2,595.44	1,492.56
Membership Fees & Subscriptions	2,067.63	1,007.27
Printing, Postage & Stationery	2,846.68	7,509.20
Repairs & Maintenance	1,611.50	241.36
Security Costs	136.36	-
Service Contract	7,000.00	8,000.00
Staff Amenities	-	45.91
Sundry Expenses	-	0.27
Superannuation Contributions	13,800.30	11,036.26
Telephone & Internet	4,688.09	4,153.85
Tool Allowance	240.00	-
Transport Fees	190.64	234.84
Travel Reimbursement	2,854.80	2,744.04
Wages & Salaries	138,216.01	129,591.89

These statements should be read in conjunction with the attached compilation
report of Ross Fowler & Co.

	2019	2018
	\$	\$
Wages - Cleaning	5,531.76	5,212.62
Work Cover	4,405.23	4,514.11
	<u>221,333.49</u>	<u>209,162.40</u>
NET DEFICIT	<u>(1,371.64)</u>	<u>(160.86)</u>

These statements should be read in conjunction with the attached compilation
report of Ross Fowler & Co.

	2019 \$	2018 \$
WORK FOR DOLE (192-12)		
INCOME		
Funds from Liability Account	-	1,458.45
Work 4 Dole Funds	27,780.42	1,880.24
	<u>27,780.42</u>	<u>3,338.69</u>
EXPENSES		
Activity Expenses - Food, Contribution & Materials	881.12	419.09
Cleaning & Gardening	30.23	-
Building & Construction	-	450.00
Equipment & Furniture Purchases (Small Items)	2,232.00	45.45
Facilitator Fees	2,100.00	550.00
Printing, Postage & Stationery	22.68	751.55
Service Contract	1,000.00	-
Transport Fees	1,304.75	-
Travel Reimbursement	-	15.60
Wages & Salaries	20,209.64	1,107.00
	<u>27,780.42</u>	<u>3,338.69</u>
NET SURPLUS	<u>-</u>	<u>-</u>

These statements should be read in conjunction with the attached compilation
report of Ross Fowler & Co.

	2019	2018
	\$	\$
BIDWELL FESTIVAL 2017 (339-2)		
INCOME		
Funds from Liability Account	-	999.99
Project Fees/Charges	-	300.00
BRAG Ausplce Funds	-	3,454.55
	-	4,754.54
EXPENSES		
Activity Expenses - Food	-	340.91
Hire Fees/Deposits	-	4,113.64
Printing, Postage & Stationery	-	72.72
Reimbursed Fees Paid	-	227.27
	-	4,754.54
NET SURPLUS	-	-

These statements should be read in conjunction with the attached compilation
report of Ross Fowler & Co.

	2019 \$	2018 \$
BIDWILL FESTIVAL 2018 (339-3)		
INCOME		
Funds from Liability Account	259.09	-
Project Fees/Charges	536.36	277.27
BRAG Auspice Funds	3,840.91	-
	<u>4,636.36</u>	<u>277.27</u>
EXPENSES		
Activity Expenses - Food & Materials	745.80	-
Administration Contribution	19.65	-
Hire Fees	3,840.91	-
Printing, Postage & Stationery	30.00	18.18
Surplus Funds C/Forward	-	259.09
	<u>4,636.36</u>	<u>277.27</u>
NET SURPLUS	<u>-</u>	<u>-</u>

These statements should be read in conjunction with the attached compilation
report of Ross Fowler & Co.

	2019 \$	2018 \$
BIDWILL HIGH BEADING (192-6)		
INCOME		
Graceades Org Future Programs	<u>1,487.32</u>	<u>2,116.61</u>
EXPENSES		
Activity Expenses - Food & Materials	363.10	1,420.46
Equipment & Furniture Purchases (Small Items)	-	34.55
Facilitator Fees	930.00	470.00
Transport Fees	-	20.00
Travel Reimbursement	<u>194.22</u>	<u>171.60</u>
	<u>1,487.32</u>	<u>2,116.61</u>
NET SURPLUS	<u>-</u>	<u>-</u>

These statements should be read in conjunction with the attached compilation
report of Ross Fowler & Co.

	2019	2018
	\$	\$
WILLMOT HUB MEN'S SHED (335)		
INCOME		
Project Fees/Charges	-	990.00
Bootcamp Administration	-	11,720.79
	-	12,710.79
EXPENSES		
Activity Expenses - Food & Materials	-	2,544.96
Superannuation Contributions	-	810.83
Tool Allowance	-	460.00
Wages & Salaries	-	8,895.00
	-	12,710.79
NET SURPLUS	-	-

These statements should be read in conjunction with the attached compilation
report of Ross Fowler & Co.

	2019 \$	2018 \$
COTTAGE GARDEN PROJECT 2 (350)		
INCOME		
NSW Housing	-	18,000.00
EXPENSES		
Building & Construction	-	18,000.00
NET SURPLUS	-	-

These statements should be read in conjunction with the attached compilation
report of Ross Fowler & Co.

	2019 \$	2018 \$
DSS STRENGTH COMM GRANT (351)		
INCOME		
Department of Social Services	-	2,848.00
EXPENSES		
Equipment & Furniture Purchases (Small Items)	-	636.36
Surplus Funds C/Forward	-	2,211.64
	-	2,848.00
NET SURPLUS	-	-

These statements should be read in conjunction with the attached compilation
report of Ross Fowler & Co.

	2019 \$	2018 \$
GARDEN KITCHEN SHED (354)		
INCOME		
Funds from Liability Account	-	100.00
Grants - NSW Govt Building	239.00	-
	<u>239.00</u>	<u>100.00</u>
EXPENSES		
Building & Construction	239.00	100.00
	<u>239.00</u>	<u>100.00</u>
NET SURPLUS	<u>-</u>	<u>-</u>

These statements should be read in conjunction with the attached compilation
report of Ross Fowler & Co.

	2019 \$	2018 \$
GRACEADES ORGANISATION (250)		
INCOME		
Interest Received	471.20	809.72
Membership Fees	18.37	16.00
Room Hire	595.46	545.46
Administration Contribution	149.71	-
	<u>1,234.74</u>	<u>1,371.18</u>
EXPENSES		
Computer Software & Requisites	1,234.74	-
Surplus Funds C/Forward	-	1,371.18
	<u>1,234.74</u>	<u>1,371.18</u>
NET SURPLUS	<u>-</u>	<u>-</u>

These statements should be read in conjunction with the attached compilation
report of Ross Fowler & Co.

	2019 \$	2018 \$
GARDEN PROJECT - HOUSING (344)		
INCOME		
Funds from Liability Account	321.89	12,806.51
Account Adjustments	-	3,557.13
	<u>321.89</u>	<u>16,363.64</u>
EXPENSES		
Building & Construction	<u>321.89</u>	<u>16,363.64</u>
NET SURPLUS	<u>-</u>	<u>-</u>

These statements should be read in conjunction with the attached compilation
report of Ross Fowler & Co.

	2019 \$	2018 \$
BASKETBALL PROJECT (192-3)		
INCOME		
Bootcamp Administration	<u>1,900.00</u>	<u>-</u>
EXPENSES		
Expendable Equipment	<u>1,900.00</u>	<u>-</u>
NET SURPLUS	<u><u>-</u></u>	<u><u>-</u></u>

These statements should be read in conjunction with the attached compilation
report of Ross Fowler & Co.

	2019 \$	2018 \$
BIDWILL FESTIVAL 2019 (339-4)		
INCOME		
Project Fees/Charges	<u>445.45</u>	<u>-</u>
EXPENSES		
Printing, Postage & Stationery	18.18	-
Surplus Funds C/Forward	<u>427.27</u>	<u>-</u>
	<u>445.45</u>	<u>-</u>
NET SURPLUS	<u>-</u>	<u>-</u>

These statements should be read in conjunction with the attached compilation
report of Ross Fowler & Co.

	2019 \$	2018 \$
<hr/>		
MENTAL HEALTH EVENT (355)		
INCOME		
Donations Received	<u>762.31</u>	<u>-</u>
EXPENSES		
Activity Expenses - Food	<u>762.31</u>	<u>-</u>
NET SURPLUS	<u><u>-</u></u>	<u><u>-</u></u>

These statements should be read in conjunction with the attached compilation
report of Ross Fowler & Co.

	2019 \$	2018 \$
<hr/>		
ABORIGINAL ART (356)		
INCOME		
Bootcamp Administration	<u>1,601.26</u>	<u>-</u>
EXPENSES		
Activity Expenses - Materials	101.26	-
Facilitator Fees	<u>1,500.00</u>	<u>-</u>
	<u>1,601.26</u>	<u>-</u>
NET SURPLUS	<u>-</u>	<u>-</u>

These statements should be read in conjunction with the attached compilation
report of Ross Fowler & Co.



Layout Design by: Tania Ghosn, Mat Ingram and Ivanka Pelikan
18th October 2019